

## ECODRILL



Symbolic image

- Simple hand held tool to drill accurate hole patterns for Blum hinges
- Driven by hand drill
- Variable drilling distance (2–8 mm)
- Assembly on a marking line
- Material: aluminium die casting

### Assembly possibilities

AVENTOS HF  
AVENTOS HK-XS  
CLIP top BLUMOTION  
CLIP top  
MODUL

### Page instructions

Overview – templates	618
Overview – assembly possibilities	620

### Application video



### Short-URL

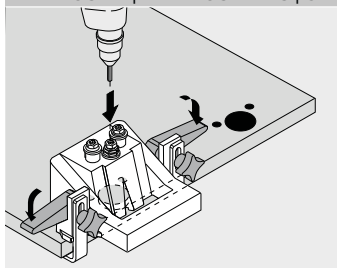
[www.blum.com/1SeQww](http://www.blum.com/1SeQww)

### Order information

Description	Part no.	Accessories	Part no.
ECODRILL	M31.1000	<b>Description</b>	
<b>Composed of:</b>		Drill bit Ø 8 mm	M31.ZB08.02
– 1 x Drilling template		Fittings drill bit Ø 35 mm	M31.ZB35.02
– 2 x Drill bit Ø 8 mm		Tool set	MZW.1300
– 1 x Fittings drill bit Ø 35 mm		Clip-on part for bi-fold hinge	M31.1900
– 2 x TORX bit			
– 2 x Adjustable clamps			

### Assembly possibilities

AVENTOS HF | AVENTOS HK-XS | CLIP top BLUMOTION | CLIP top | MODUL



#### Hinge system assembly

- Adjust drilling distance setting
- Mark desired hinge position
- Position ECODRILL on marking line and fix with clamping lever
- Drill hinge drilling pattern using hand drill