

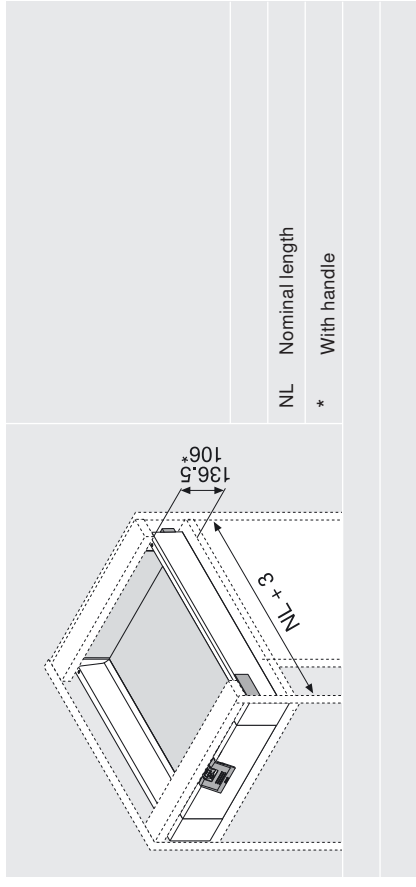
# Suitable inner drawers for TANDEMBOX intivo

## Inner drawer height M

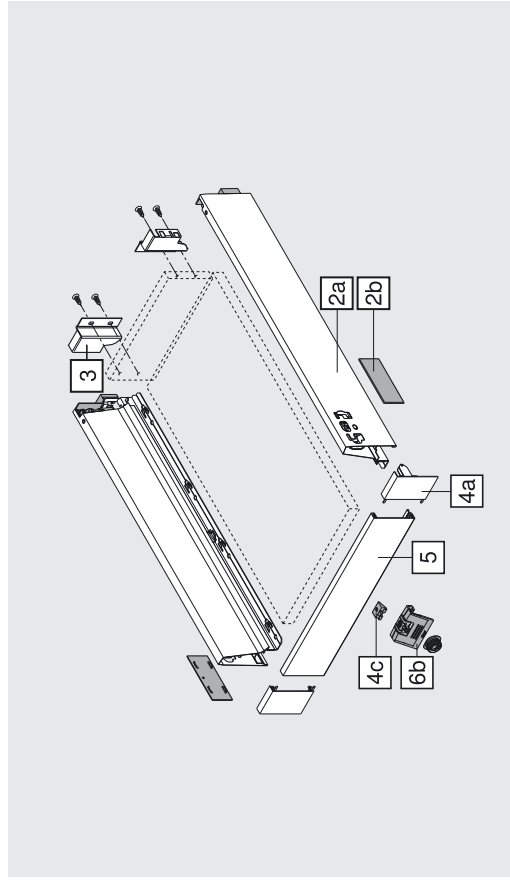
Product



Space requirement



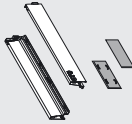
Order specification

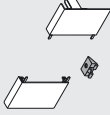


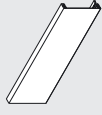
# Suitable inner drawers for TANDEMBOX intivo

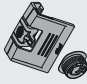
## Inner drawer height M


Order specification


2a, 2b	M drawer side left/right and cover caps	SW	TS	Inox
	Colour variants			
	Nominal length			
	270 mm	358M2702SA	358M2702IA	Steel
	300 mm	358M3002SA	358M3002IA	Steel
	350 mm	358M3502SA	358M3502IA	Steel
	400 mm	358M4002SA	358M4002IA	Steel
	450 mm	358M4502SA	358M4502IA	Steel
	500 mm	358M5002SA	358M5002IA	Steel
	550 mm	358M5502SA	358M5502IA	Steel
	600 mm	359M6002SA	359M6002IA	Steel
650 mm	359M6502SA	359M6502IA	Steel	
	SW Silk white			
	TS Terra black			

4a, 4c	Front fixing left/right	SW	TS	Nickel plated
	Colour variants			
	Incl. locking piece Z31A0008			ZIF-80M0

5	Front piece without groove	SW	TS	Nickel plated
	Colour variants			
	For cutting to size			Z31L1036A

6b	Handle and latch (optional)	SW	Nylon	ZIF-80M7
	Colour variants			

3	Back fixing left/right	SW	TS	Nickel plated
	Colour variants			
				Z30M000S.04
	Steel back			
	Page			71

6c	Handle	SW	Nylon	ZIF-80M5
	Colour variants			

Cabinet profiles		Page	70
Order specification			

Planning

<p><b>Space requirements in cabinet</b></p>		<p>* With ZIF-80M7 can be used with height 73 and higher</p>
<p><b>Front drilling distance for latch</b></p>		
<p><b>Back installation dimensions</b></p>		

**Cutting dim. for 16 mm chipboard**

<b>Back</b>	84 mm
<b>Base</b>	Chipboard back NL - 24 mm Steel back NL - 22 mm

KB	Cabinet width
LW	Inner cabinet width
NL	Nominal length

**Front piece without groove for cutting to size**

X = LW - 132 mm
-----------------